



**Fishermen and Scientists Research Society**


**Lobster Recruitment Project Results**


**LFA 34 2011 2012 Season**

# FSRS Lobster Recruitment Index Project – LFA 34

## Important Points and Reminders

- Previously signed MOU's valid for length of time participant in the Recruitment study.
- Reimbursement of expense allowance - **\$32.50 per trap** for only the Fall 2012 portion of the 2012 2013 season ( half of the full season expense rate).
- Must submit a completed expense claim form at the end of the season along with the completed logbook and temperature gauge.

- 
- Traps in addition to your legal limit and must display the scientific tags provided.
  - Keep a copy of the scientific permit on board the vessel.
  - Must abide by the conditions of the scientific permit.
  - Return all lobsters from the science traps to the water.

- 
- Traps to be fished in same location throughout season. If move traps record new position and advise FSRS.
  - If lose trap, report it and scientific tag number lost to FSRS immediately.
  - If lose minilog report it to FSRS immediately.

**❑ Funding for this project will run out March 31<sup>st</sup> 2013. Currently investigating new options to ensure continuation of this project. One option: participants keep legal lobsters from their science traps, traps in addition to their legal limit, and participants will have to pay for any replacement traps. April 1 2013, traps will be \$74+HST. All other equipment for this project will be provided by the FSRS.**

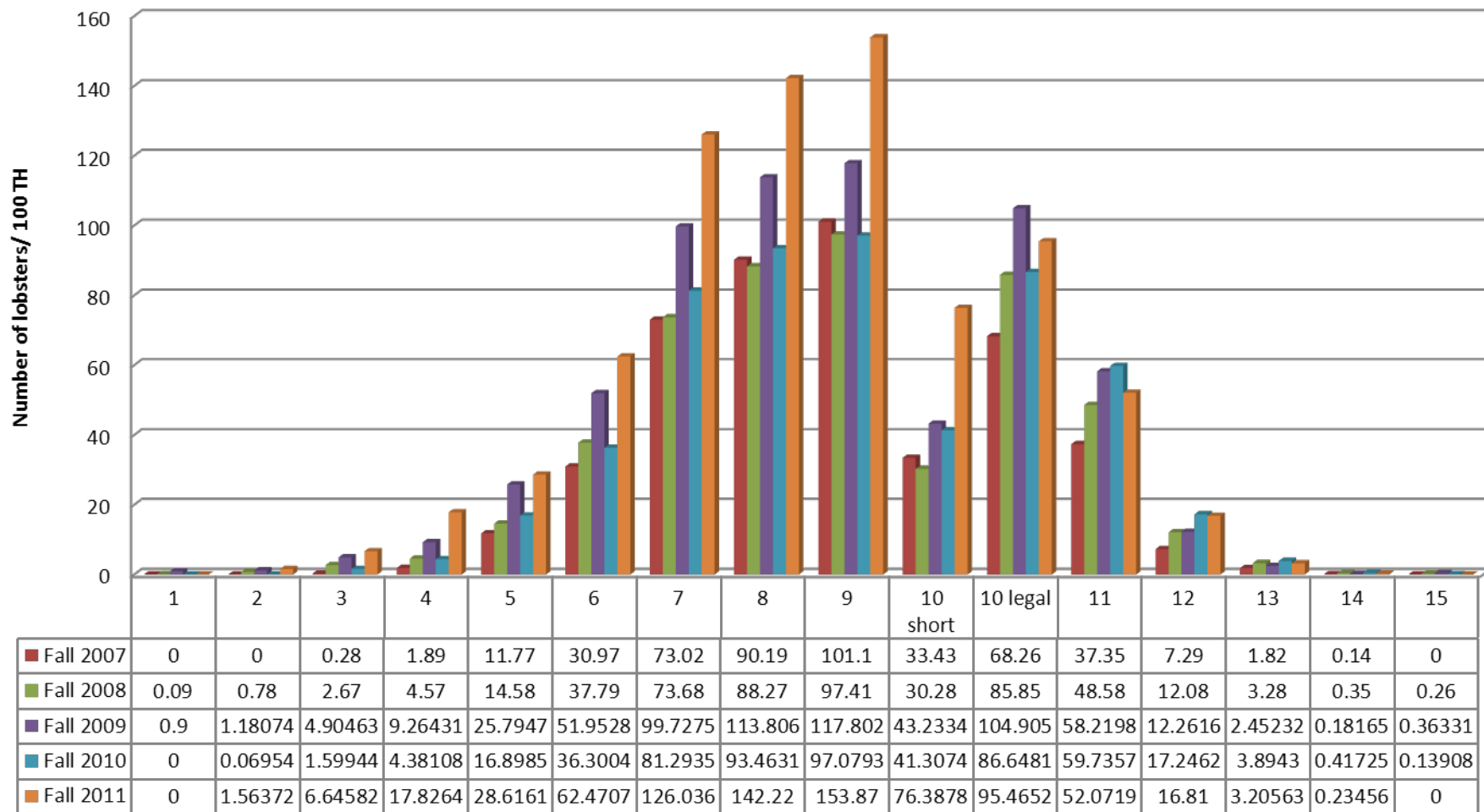
**❑ Minilog temperature gauges cost the FSRS \$250 each. PLEASE be very careful with retrieving these gauges as we have had many missing ones over the years and will be forced to charge for the use of them if they are carelessly used.**

Shannon Scott-Tibbetts

FSRS Research Biologist

1-800-226-3777 or 902-461-8119

## Number of lobsters caught for LFA 34 Fall season



Fall 2007 32 Fishermen

6819 lobsters

1427 Trap Hauls

Fall 2008 29 Fishermen

5801 lobsters

1159 Trap Hauls

Fall 2009 28 Fishermen

7123 Lobsters

1101 Trap hauls

Fall 2010 32 Fishermen

7772 Lobsters

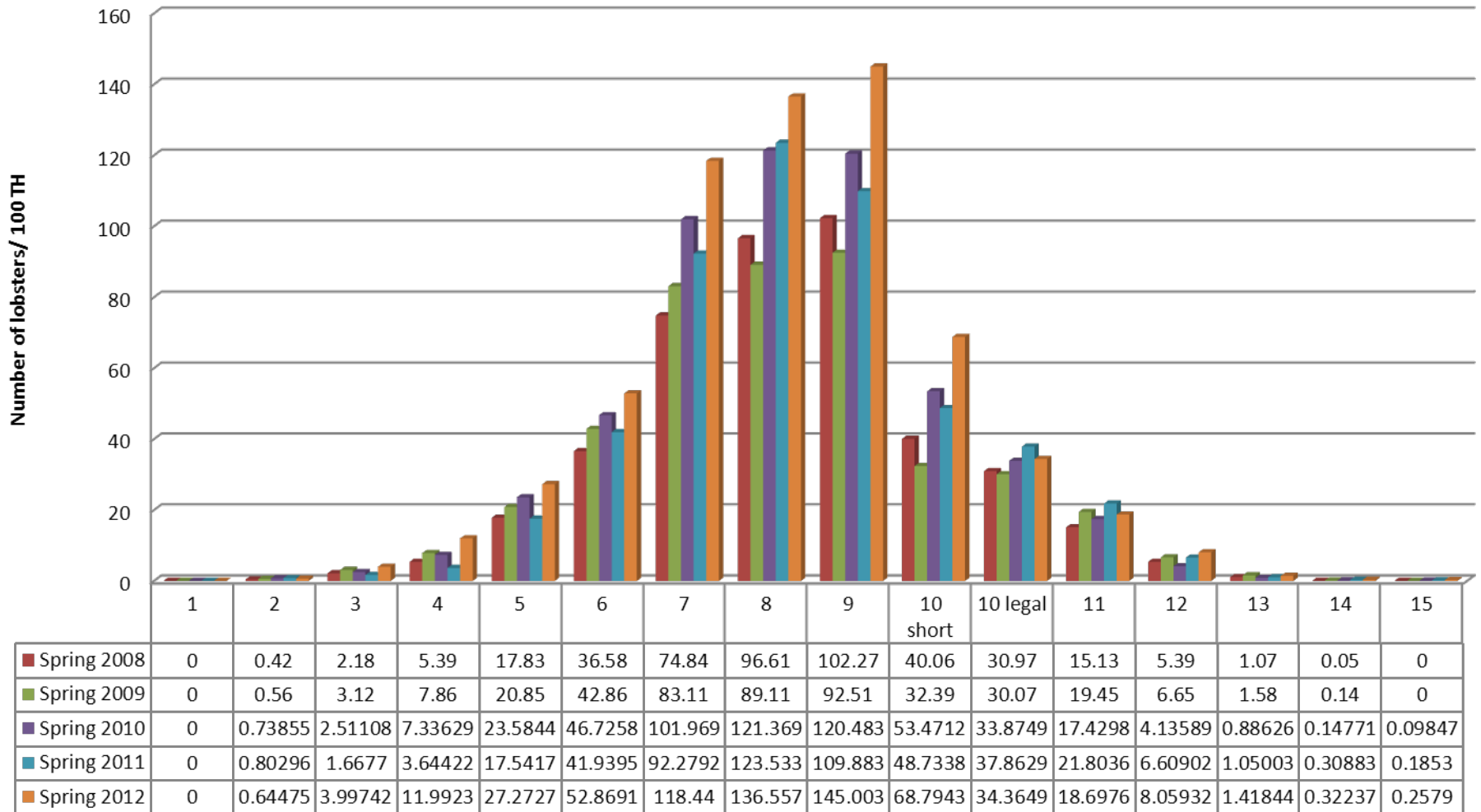
1438 Trap hauls

Fall 2011 24 Fishermen

10020 Lobsters

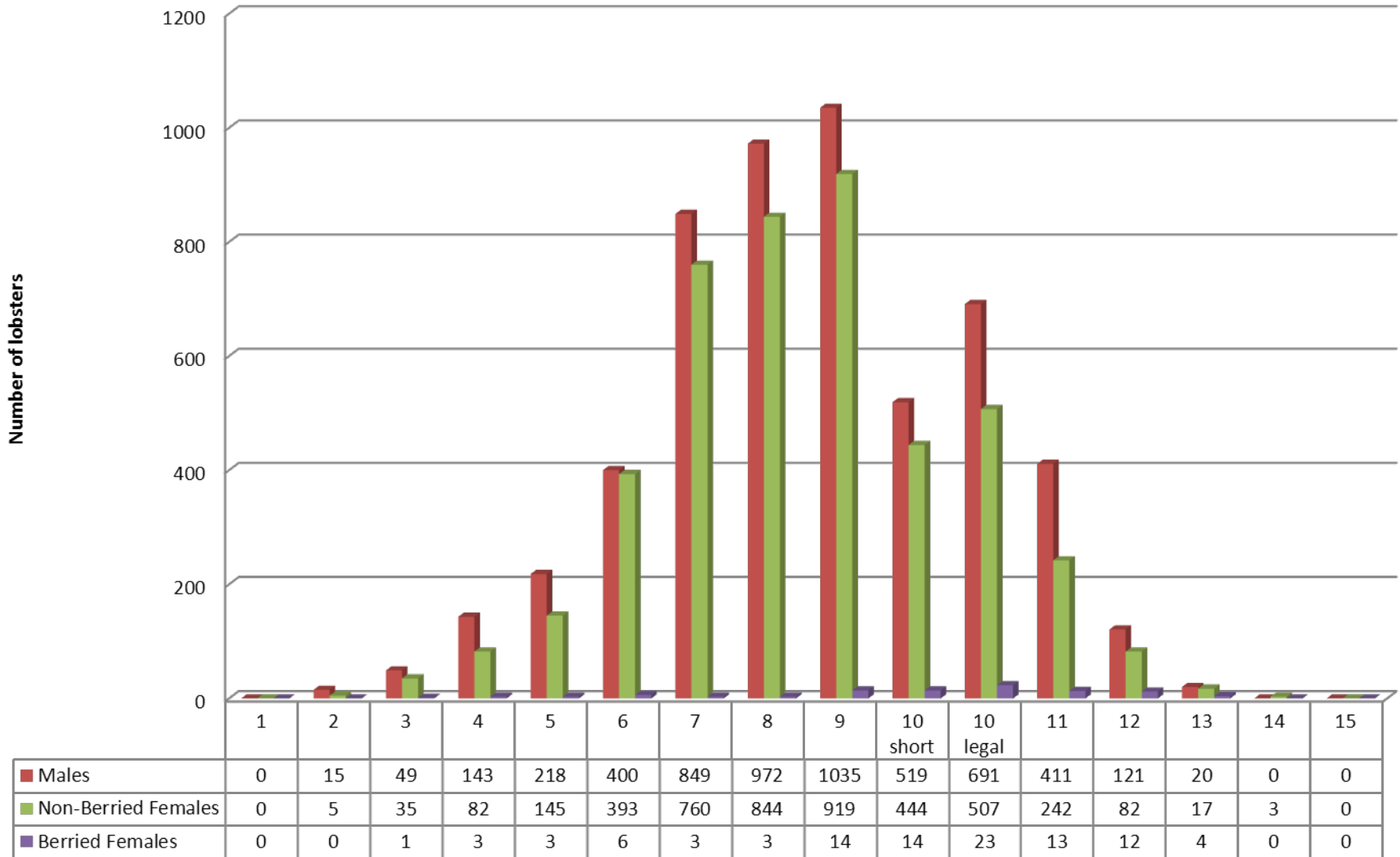
1279 Trap hauls

## Number of lobsters caught for LFA 34 Spring season



Spring 2008	30 Fishermen	9444 lobsters	2154 Trap Hauls
Spring 2009	29 Fishermen	9259 lobsters	2149 Trap Hauls
Spring 2010	28 Fishermen	10863 Lobsters	2031 Trap Hauls
Spring 2011	32 Fishermen	8222 Lobster	1619 Trap hauls
Spring 2012	24 Fishermen	9751 Lobsters	1551 Trap hauls

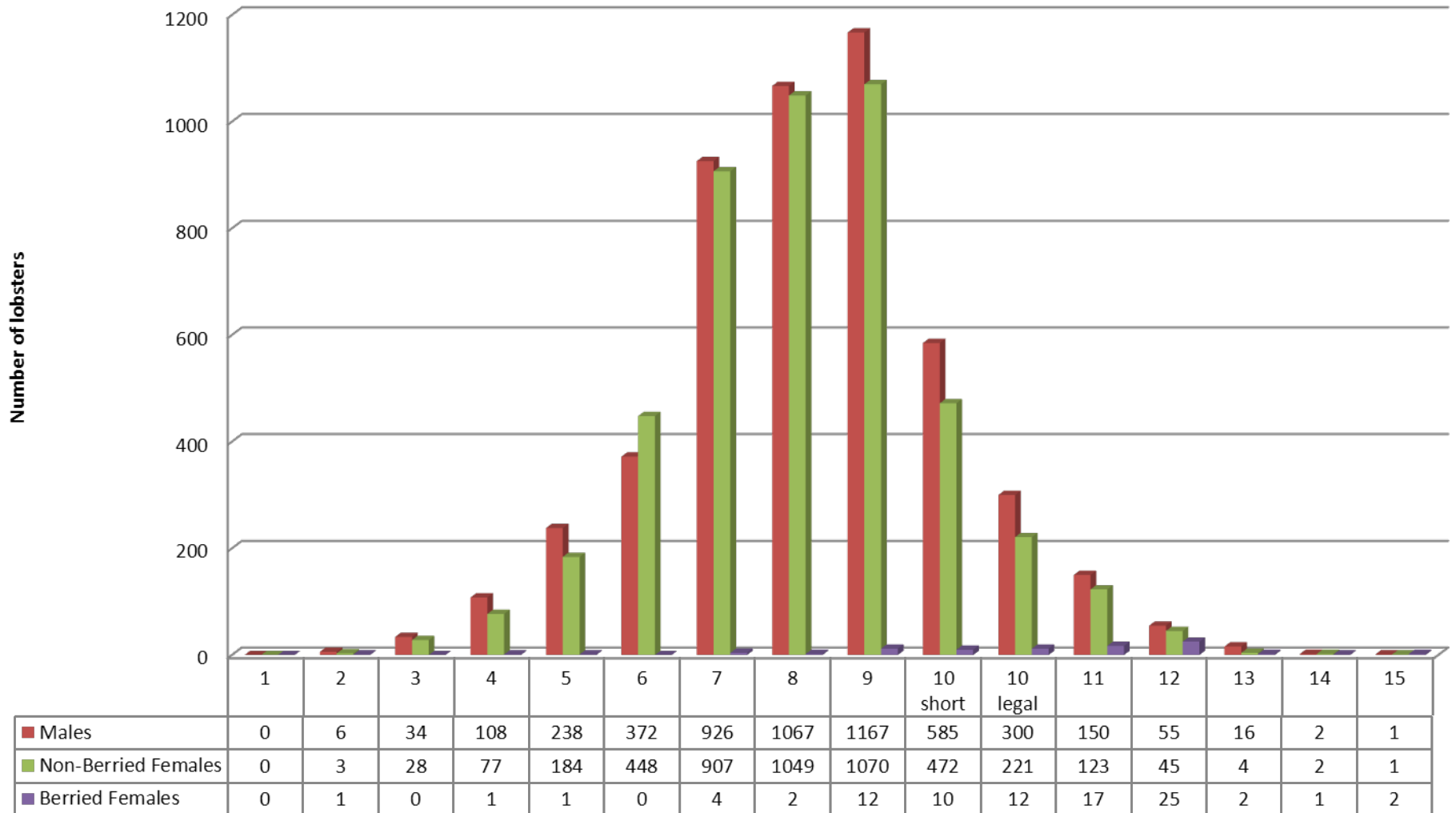
# Number of lobsters caught per sex for LFA 34 Fall 2011



Fall 2010 Males=4090 Non-Berried Females=3657 Berried Females=25  
 Fall 2011 Males=5443 Non-Berried Females=4478 Berried Females=99



## Number of lobsters caught by sex for LFA 34 Spring 2012



Spring 2011  
Spring 2012

Males=4217  
Males=5027

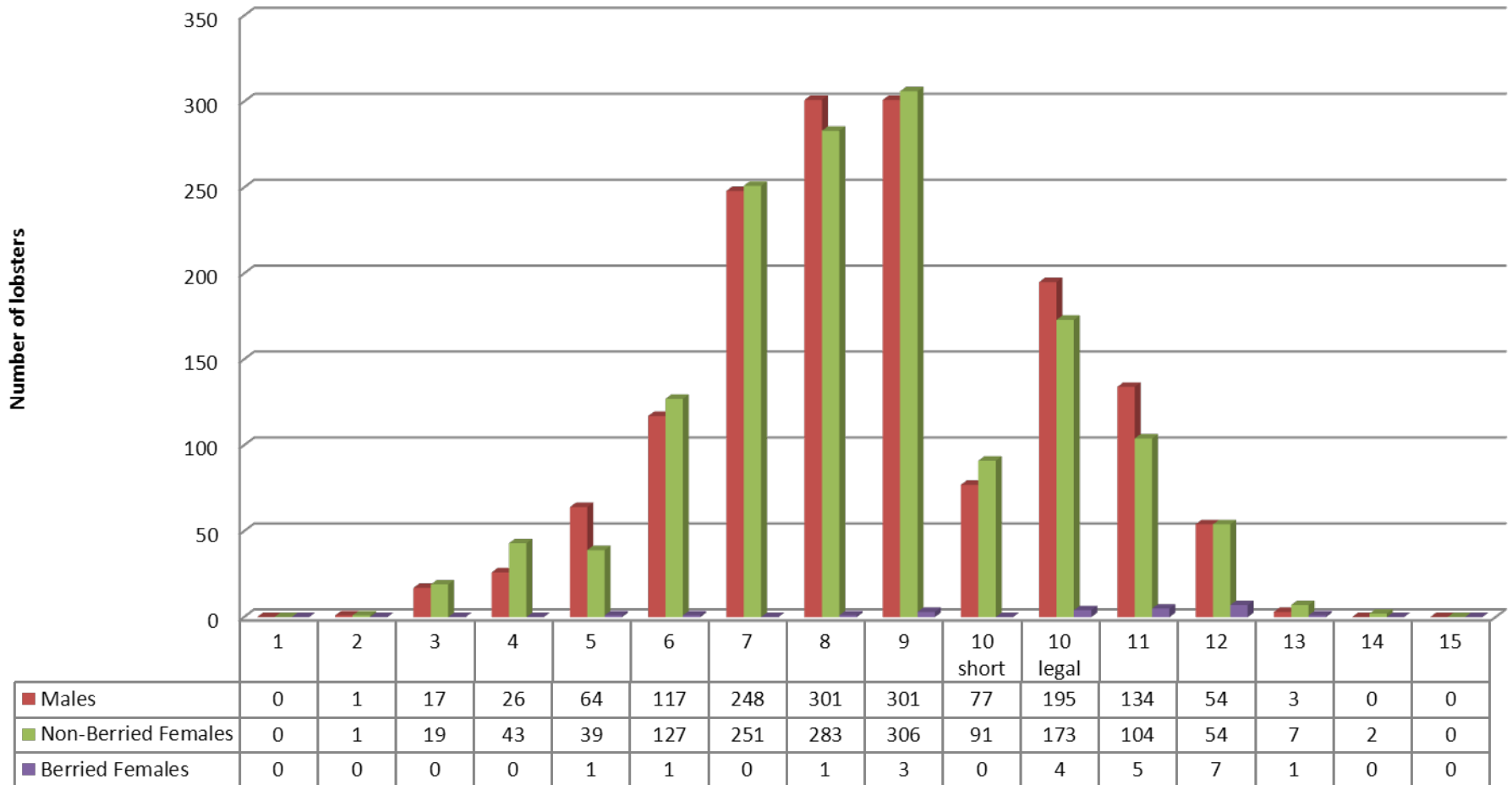
Non-berried Females=3970  
Non-Berried Females=4634

Berried Females =35  
Berried Females=90

# Number of lobsters caught for Cape Sable area Fall 2011

**3061 Lobsters**

**462 Trap hauls**



Fall 2010 Males= 709

Non-Berried Females= 724

Berried Females= 2

Fall 2011 Males=1538

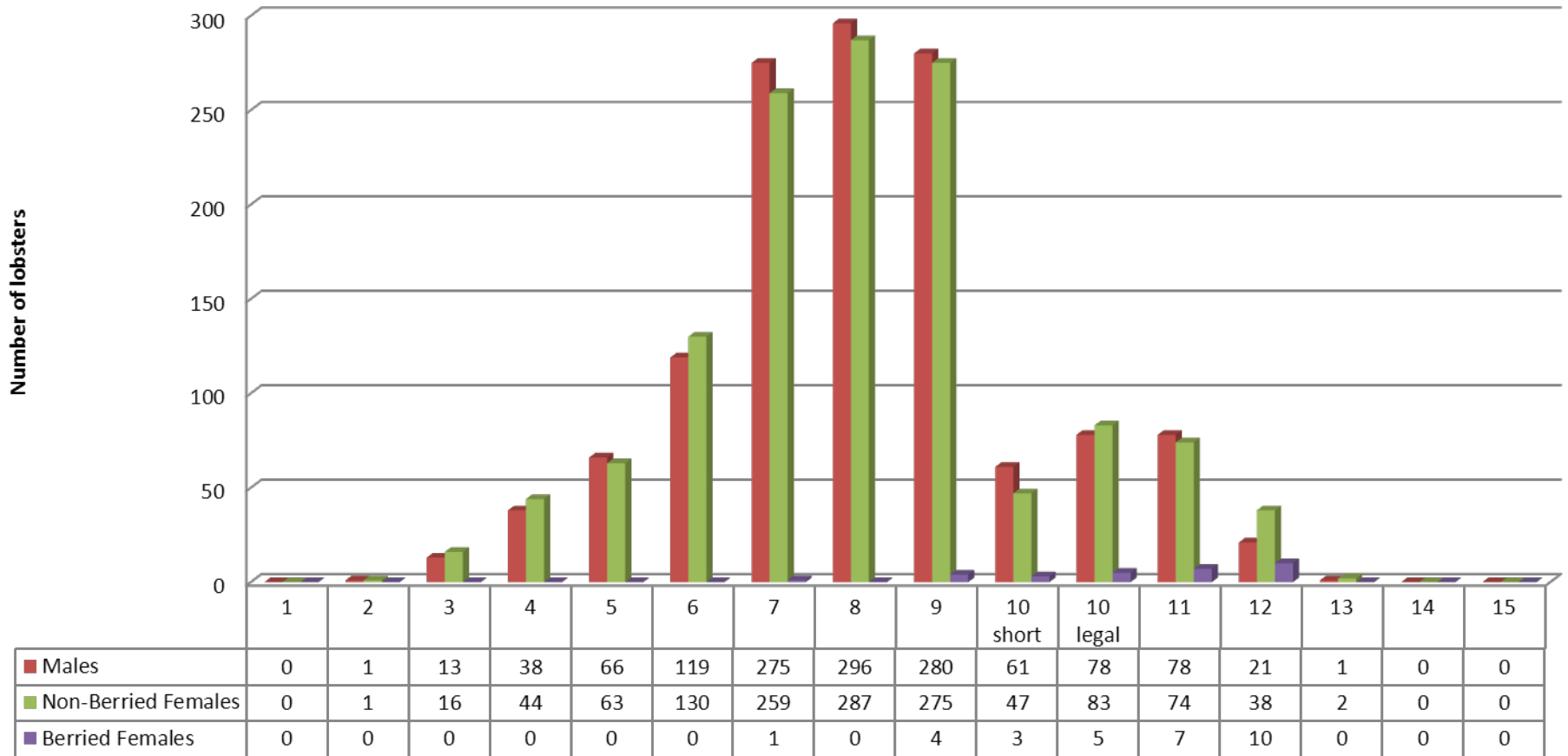
Non-Berried Females=1500

Berried Females=23

# Number of lobsters caught per sex for Cape Sable area Spring 2012

**2676 Lobsters**

**482 Trap hauls**



Spring 2011 Males= 608

Non-Berried Females=607

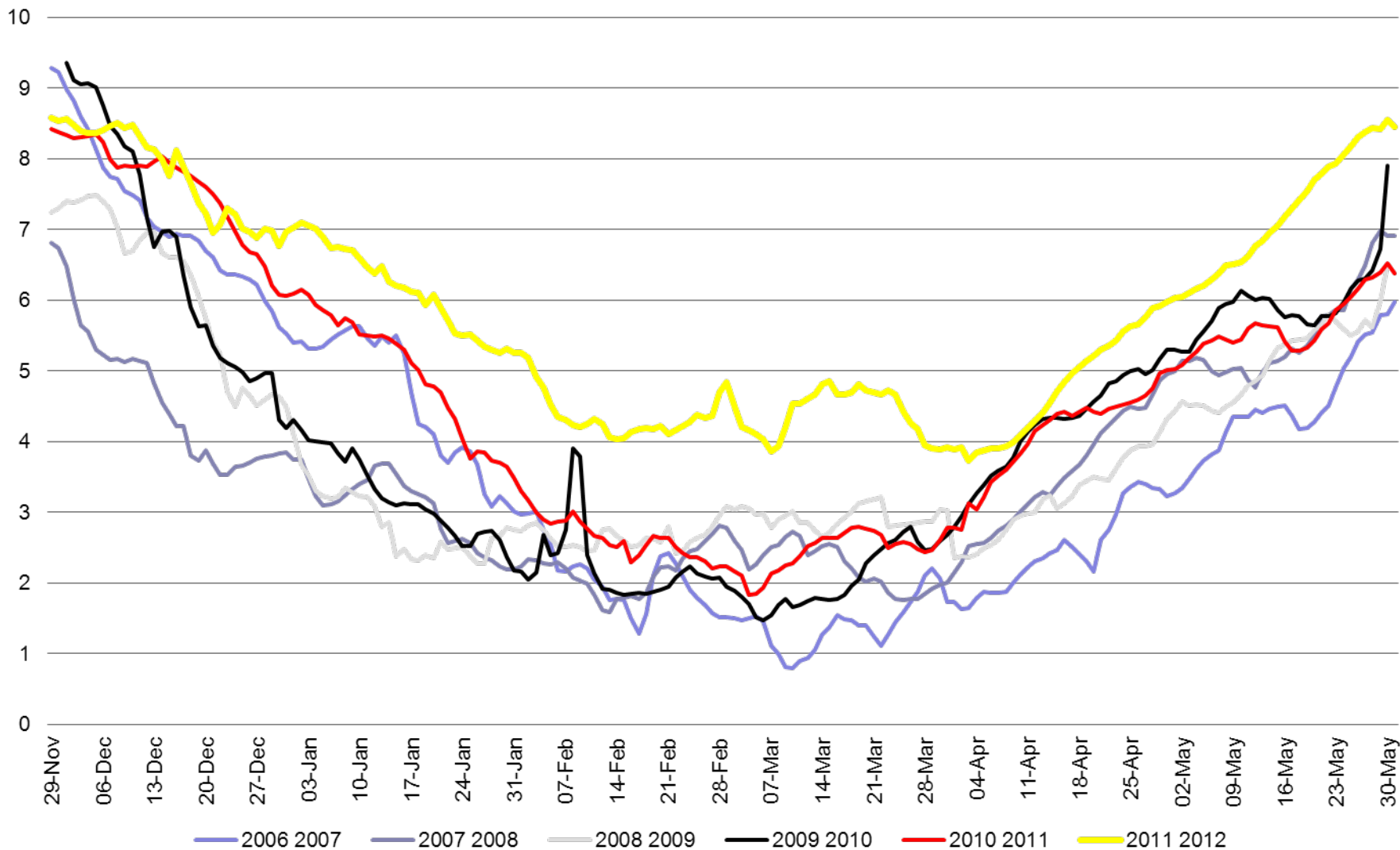
Berried Females= 1

Spring 2012 Males=1327

Non-Berried Females=1319

Berried Females= 30

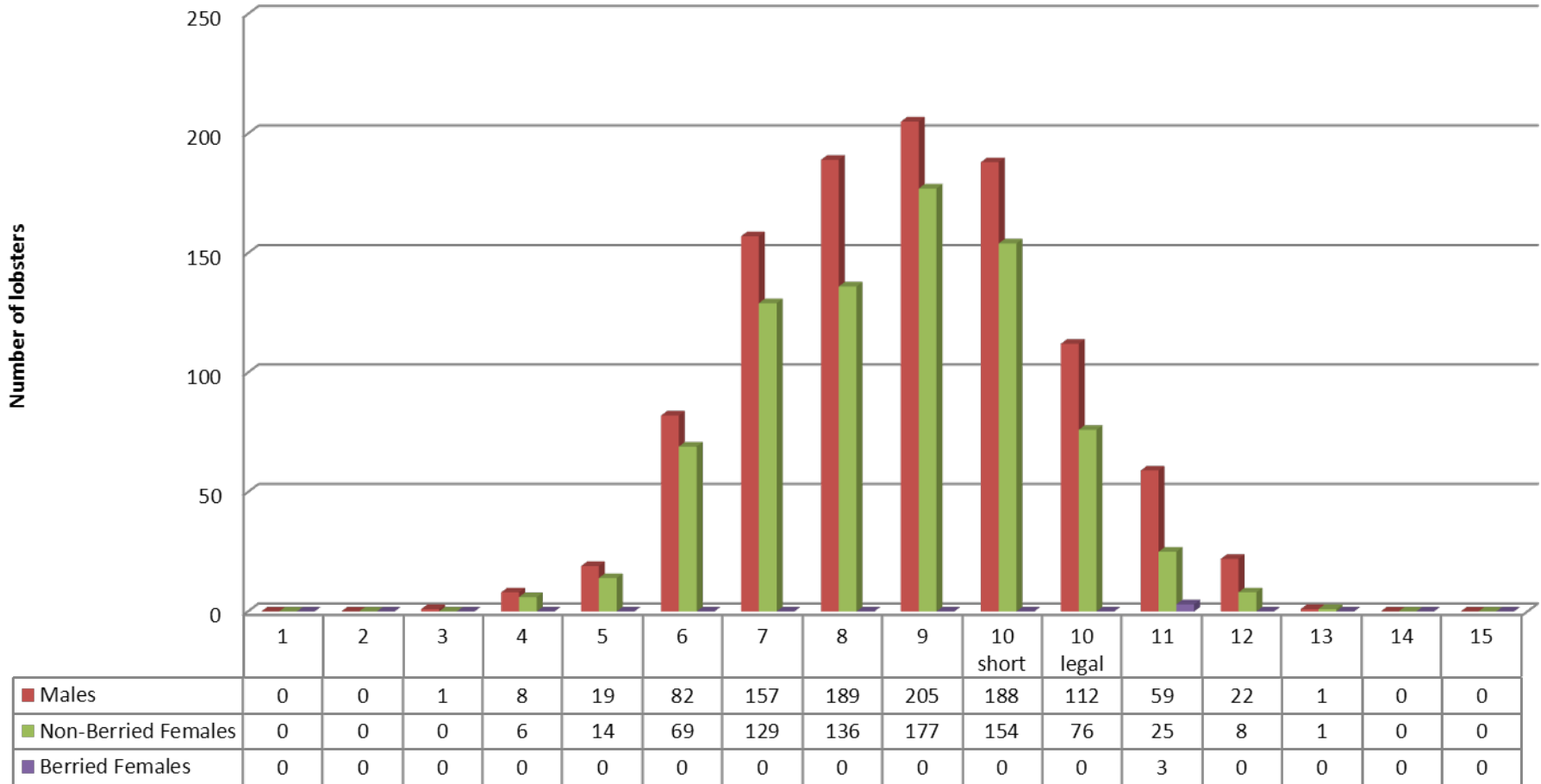
# Average Bottom temperatures for Cape Sable area LFA 34



## Number of lobsters caught for Lobster Bay area Fall 2011

**1841 Lobsters**

**161 Trap hauls**



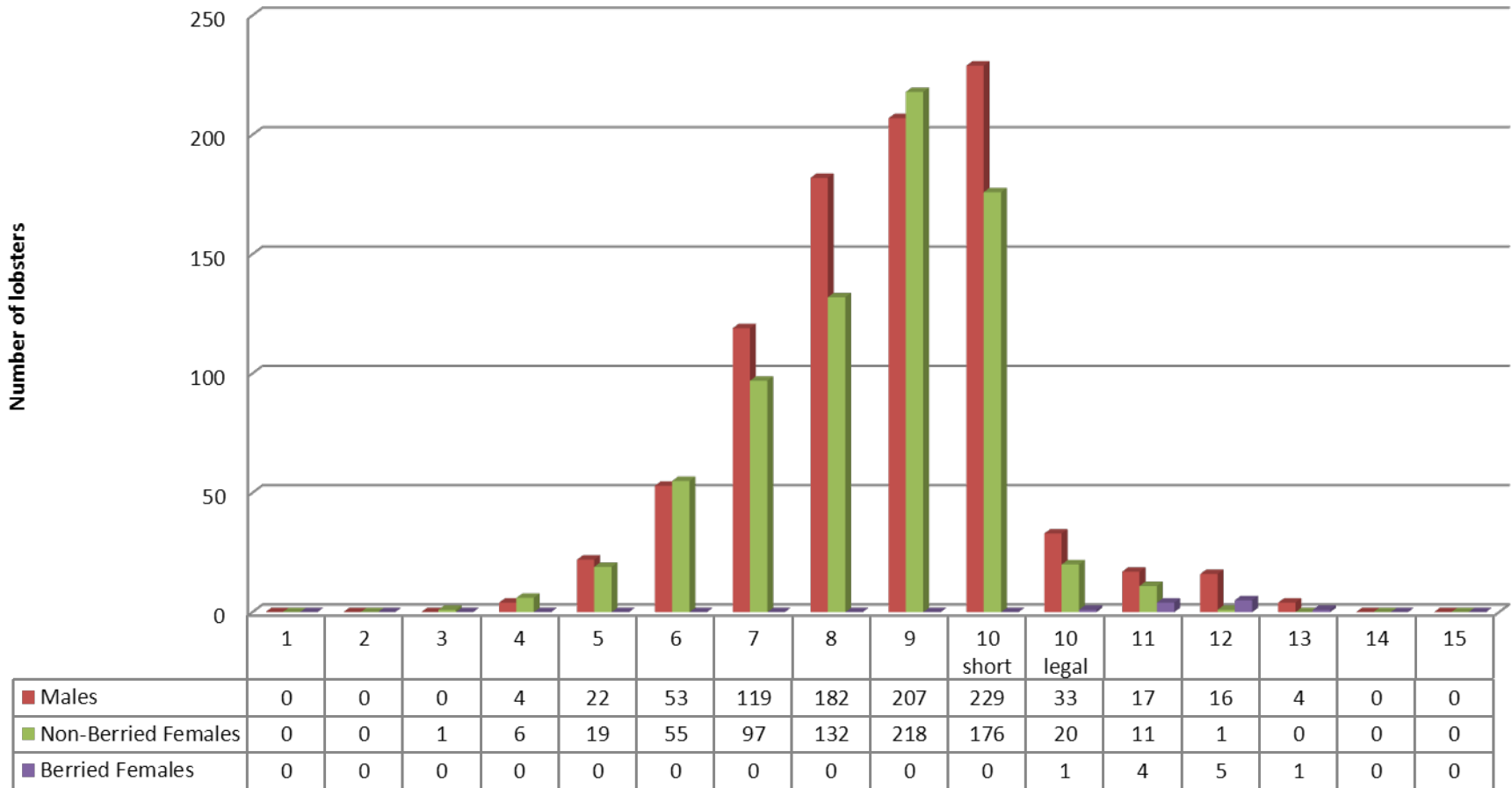
Fall 2010    Males= 1577    Non-Berried Females= 1337    Berried Females= 5

Fall 2011    Males=1043    Non-Berried Females= 795    Berried Females=3

# Number of lobsters caught for Lobster Bay area Spring 2012

**1633 Lobsters**

**244 Trap hauls**



Spring 2011 Males= 1602

Non-Berried Females= 1429

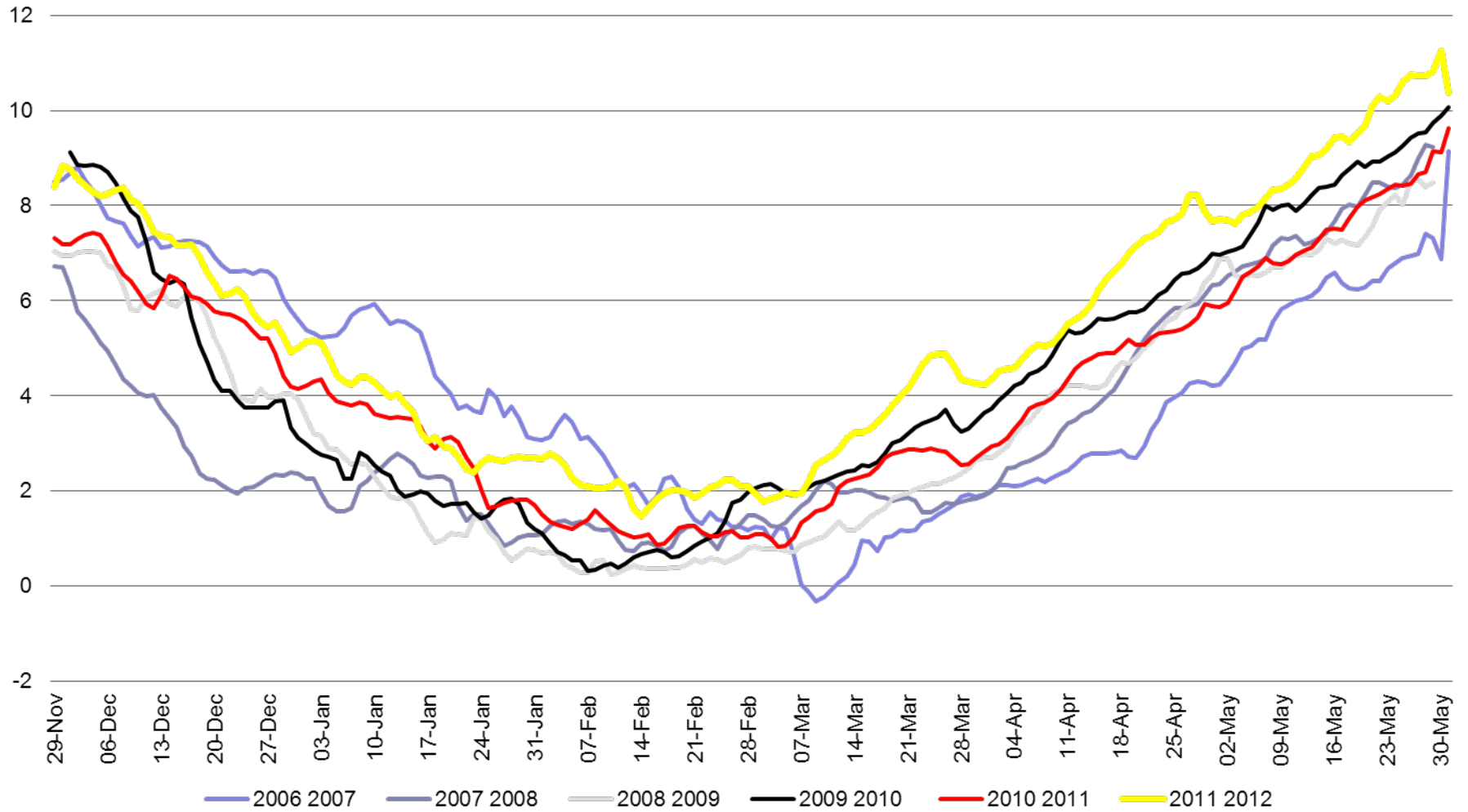
Berried Females=11

Spring 2012 Males = 886

Non-Berried Females=736

Berried Females=11

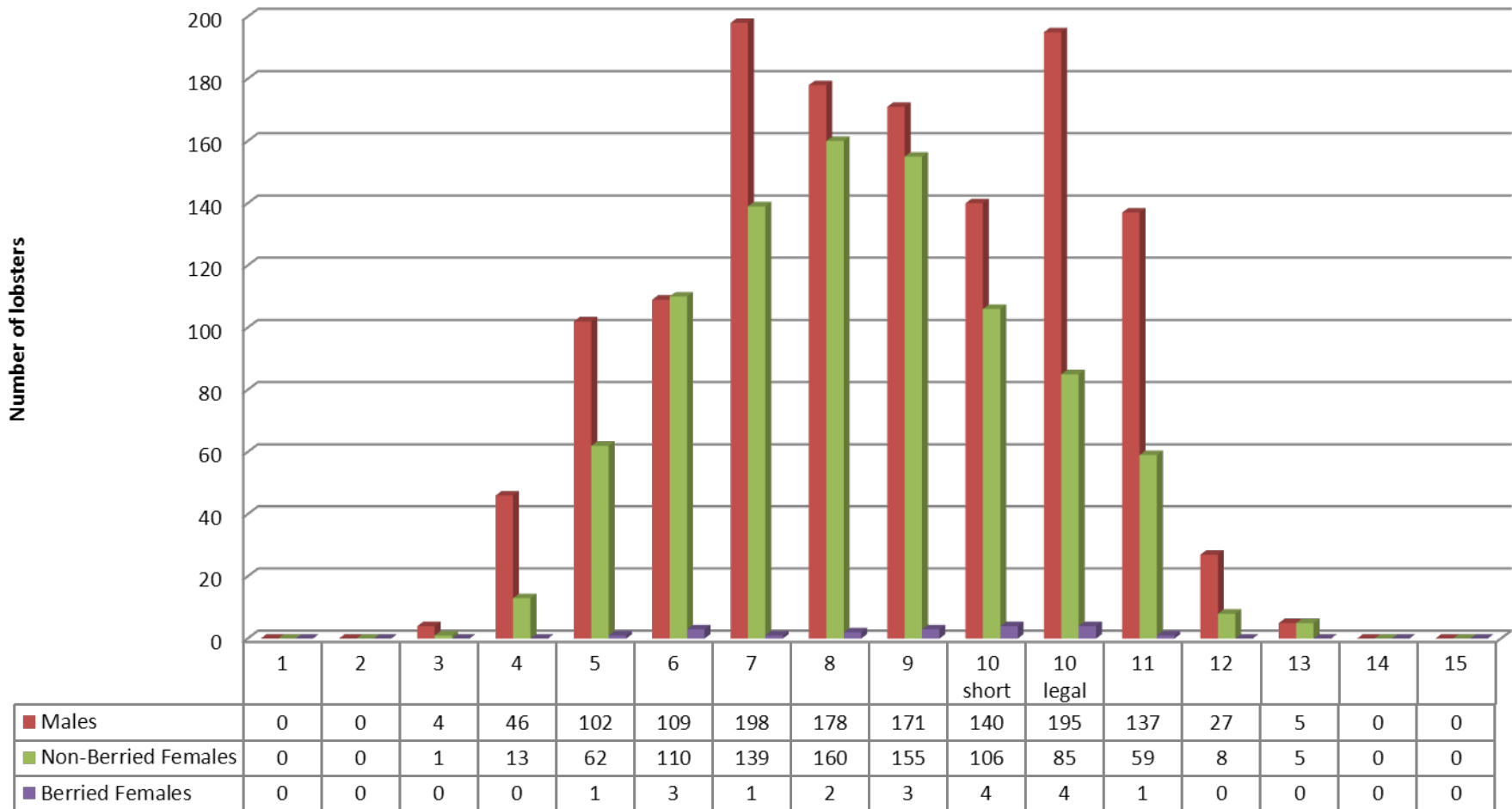
# Average Bottom Temperatures for Lobster Bay area LFA 34



# Number of lobsters caught for St Mary's Bay area for Fall 2011

**2234 Lobsters**

**277 trap hauls**



Fall 2010    Males= 1002    Non-Berried Females= 695    Berried Females= 5

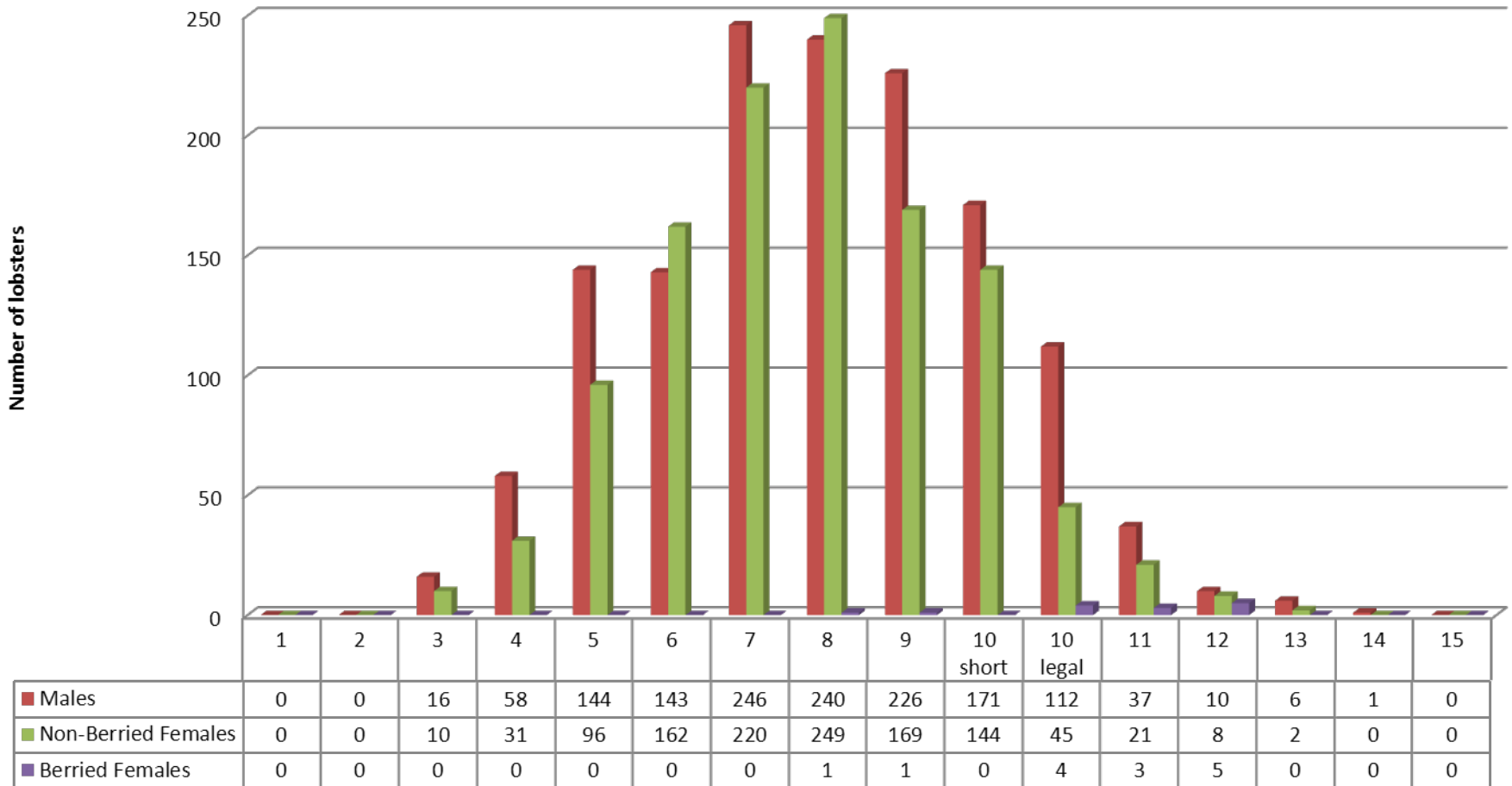
Fall 2011    Males=1312    Non-Berried Females= 903    Berried Females=19



# Number of lobsters caught for St Mary's Bay area Spring 2012

**2581 Lobsters**

**394 Trap hauls**



Spring 2011 Males= 1327 Non-Berried Females= 1233 Berried Females= 13

Spring 2012 Males= 1410 Non-Berried Females= 1157 Berried Females= 14

# Average Bottom Temperatures for St Mary's Bay area LFA 34

