

**FISHERMEN AND SCIENTISTS RESEARCH SOCIETY**  
**LOBSTER RECRUITMENT INDEX FROM STANDARD TRAPS**  
**LFA 29-30 Summary 2014 season**



Lobster Recruitment project trap measures 14"x 21"x 40". It has 1 " mesh, no escape vents and a biodegradable panel

**Shannon Scott-Tibbetts**  
**April 15, 2015**

# FSRS Lobster Recruitment Index Project– LFA 29

## Important Points and Reminders

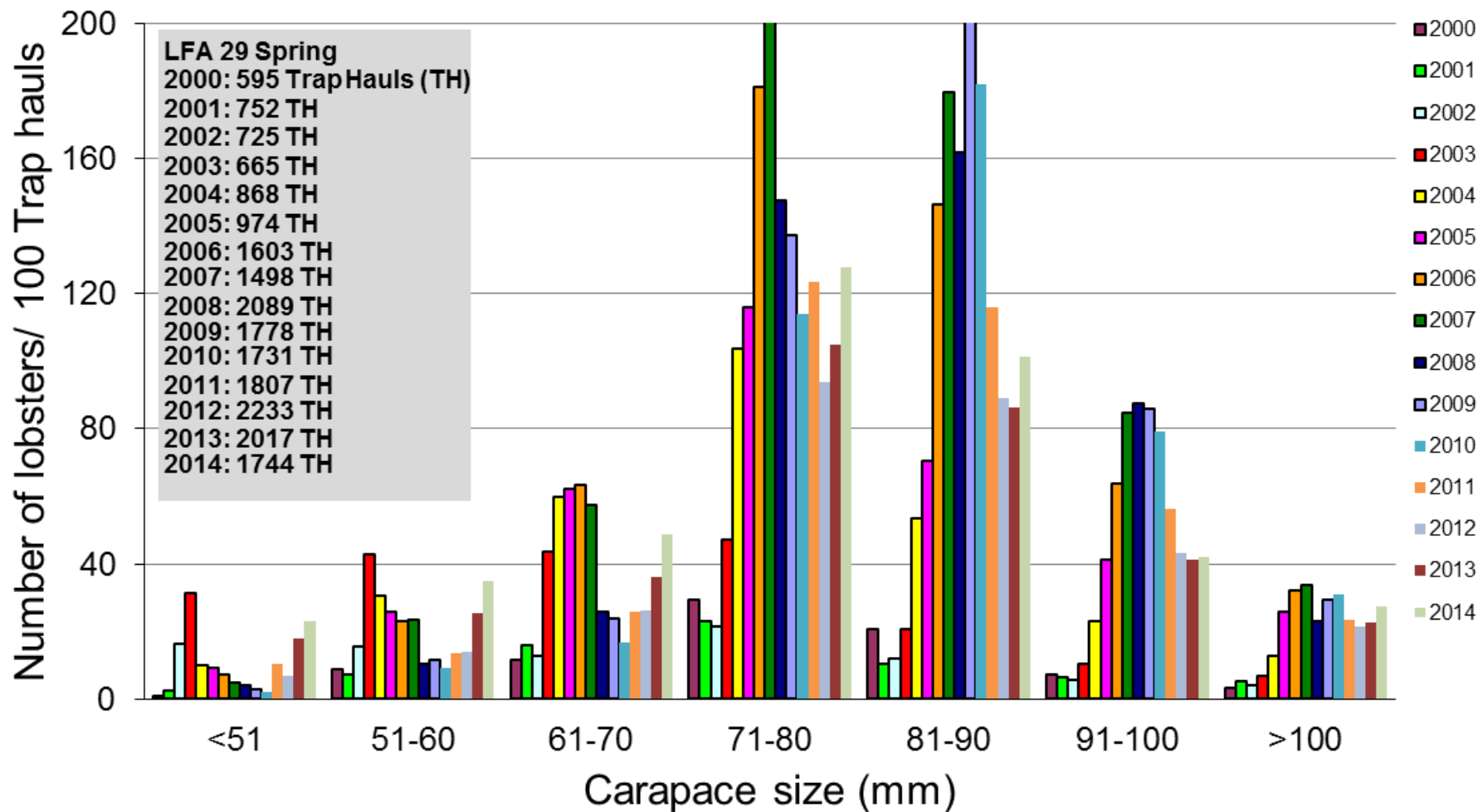
- Traps in addition to your legal limit and must display the scientific tags provided.
- Keep a copy of the scientific permit on board the vessel.
- Must abide by the conditions of the scientific permit.
- ***Able to Retain legal lobsters from the science traps***

- Recruitment Project traps to be fished in same location throughout season. If move traps record new position and advise FSRS.
- If lose trap, report it and scientific tag number lost to FSRS immediately.
- If lose minilog report it to FSRS immediately.

Shannon Scott-Tibbetts  
FSRS Research Biologist  
Or  
Tricia Pearo  
Senior Fisheries Technician

1-800-226-3777 or 902-461-8119

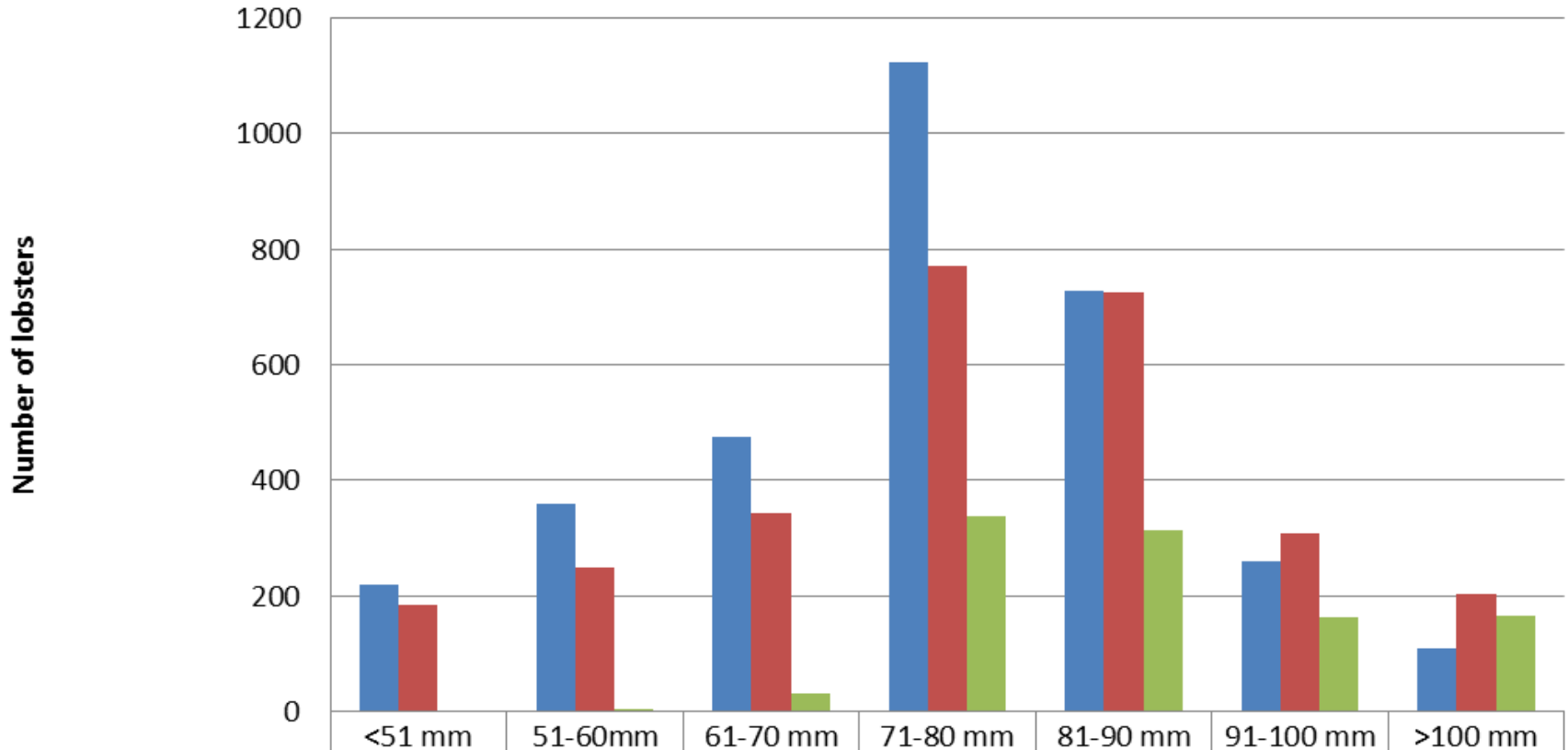
# Catch Summary for LFA 29 Spring season



**2012: 8 participants**  
**2013: 8 participants**  
**2014: 7 participants**

**2012: 6589 lobsters caught**  
**2013: 6748 lobsters caught**  
**2014: 7076 lobsters caught**

# LFA 29 Summary of Catches for 2014



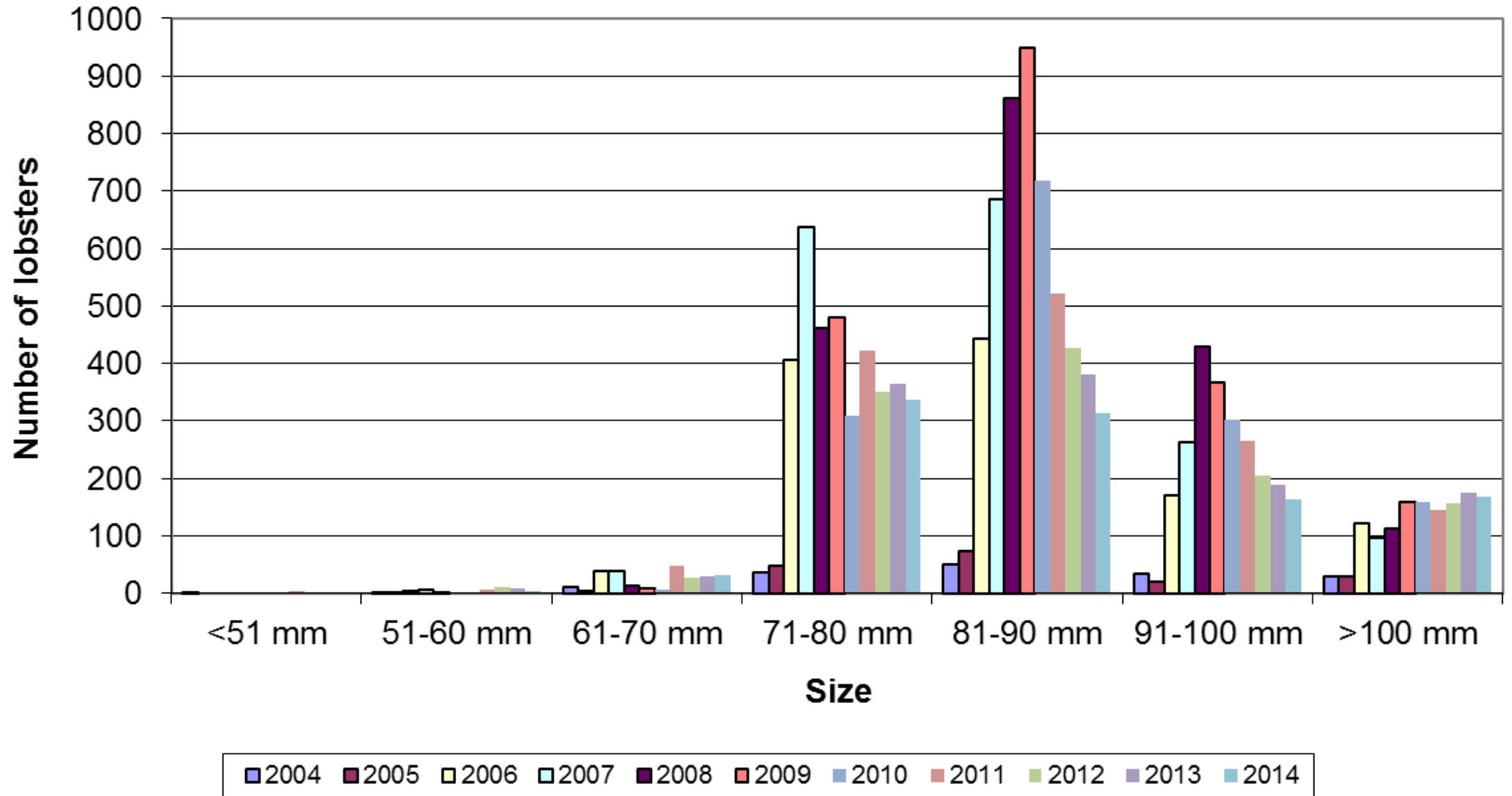
	<51 mm	51-60mm	61-70 mm	71-80 mm	81-90 mm	91-100 mm	>100 mm
■ males	219	359	475	1123	728	261	109
■ non-berried females	185	248	343	771	725	309	204
■ berried females	0	5	31	337	313	164	167

**2012:      males: 2733                  non-berried females: 2678      berried females: 1178**

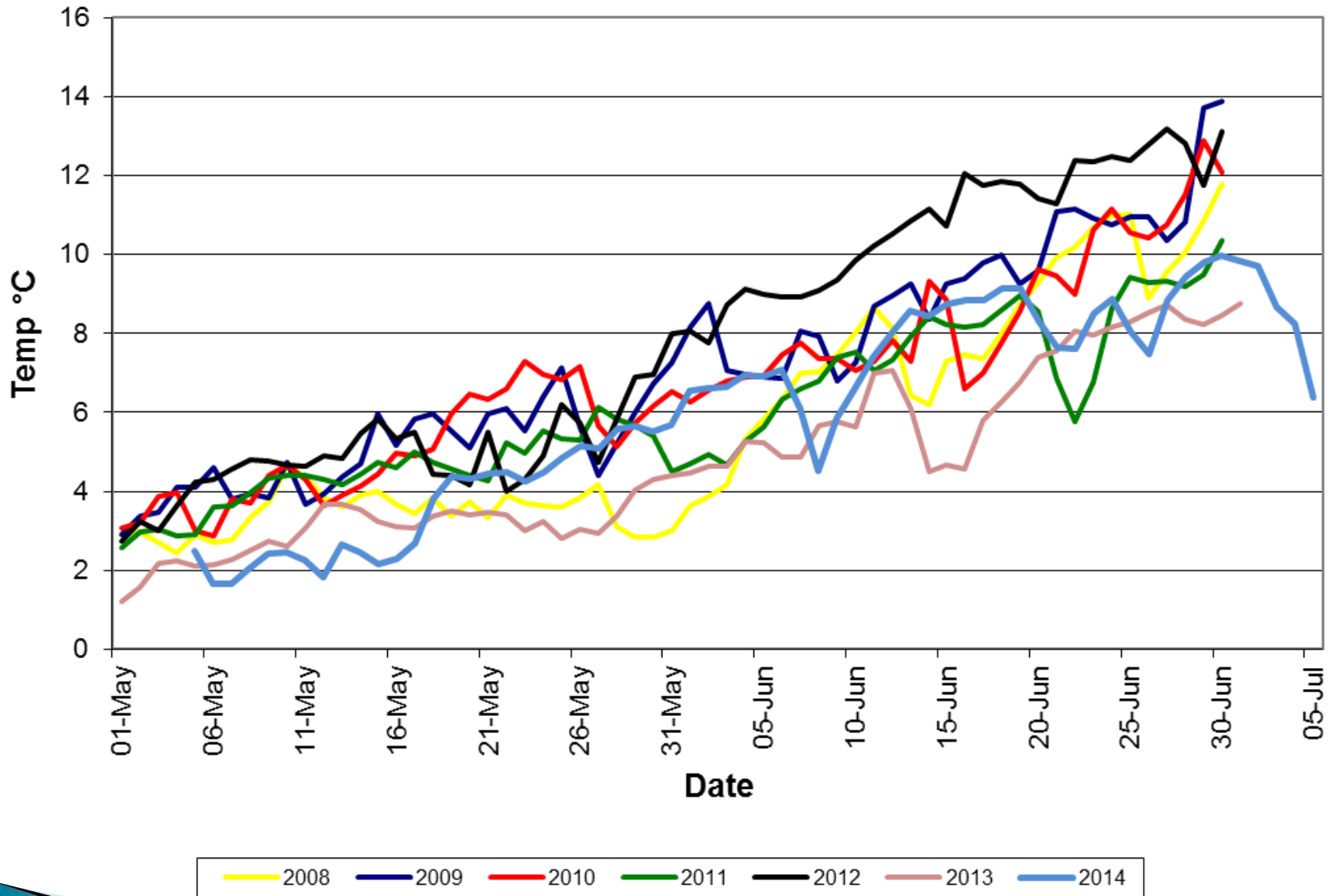
**2013:      males: 3038                  non-berried females: 2564      berried females: 1146**

**2014:      males: 3274                  non-berried females: 2785      berried females: 1017**

## Number of berried females caught in FSRs Recruitment traps Spring LFA 29

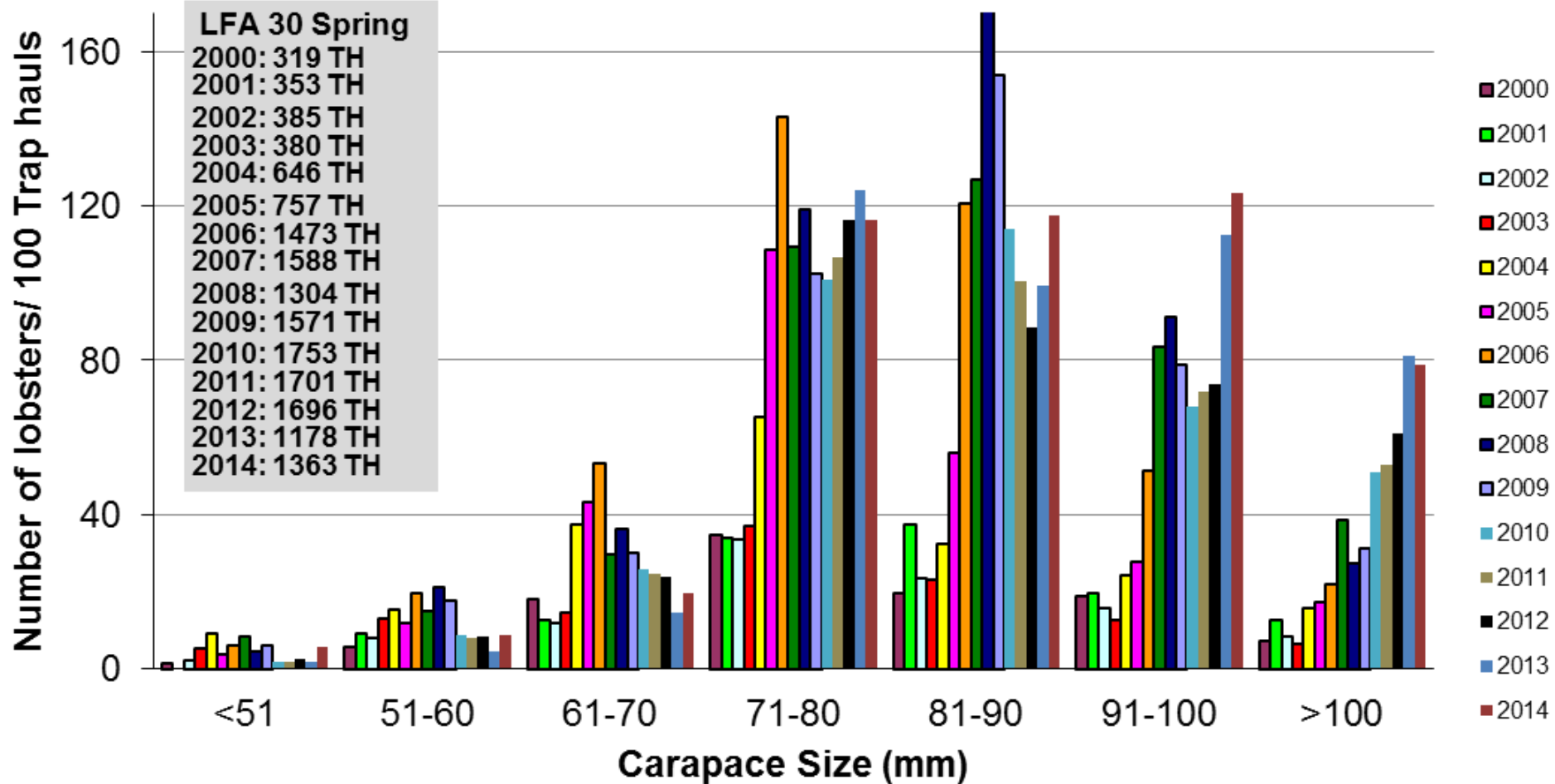


## Average Bottom Temperatures for LFA 29 Spring season



**2011: slightly cooler than year before, 2012: warmer than usual, 2013: cooler than previous years, 2014: cooler at start of season but warmed up at end**

# Catch Summary for LFA 30 Spring season



Participants: 7

Participants: 5

Participants: 6

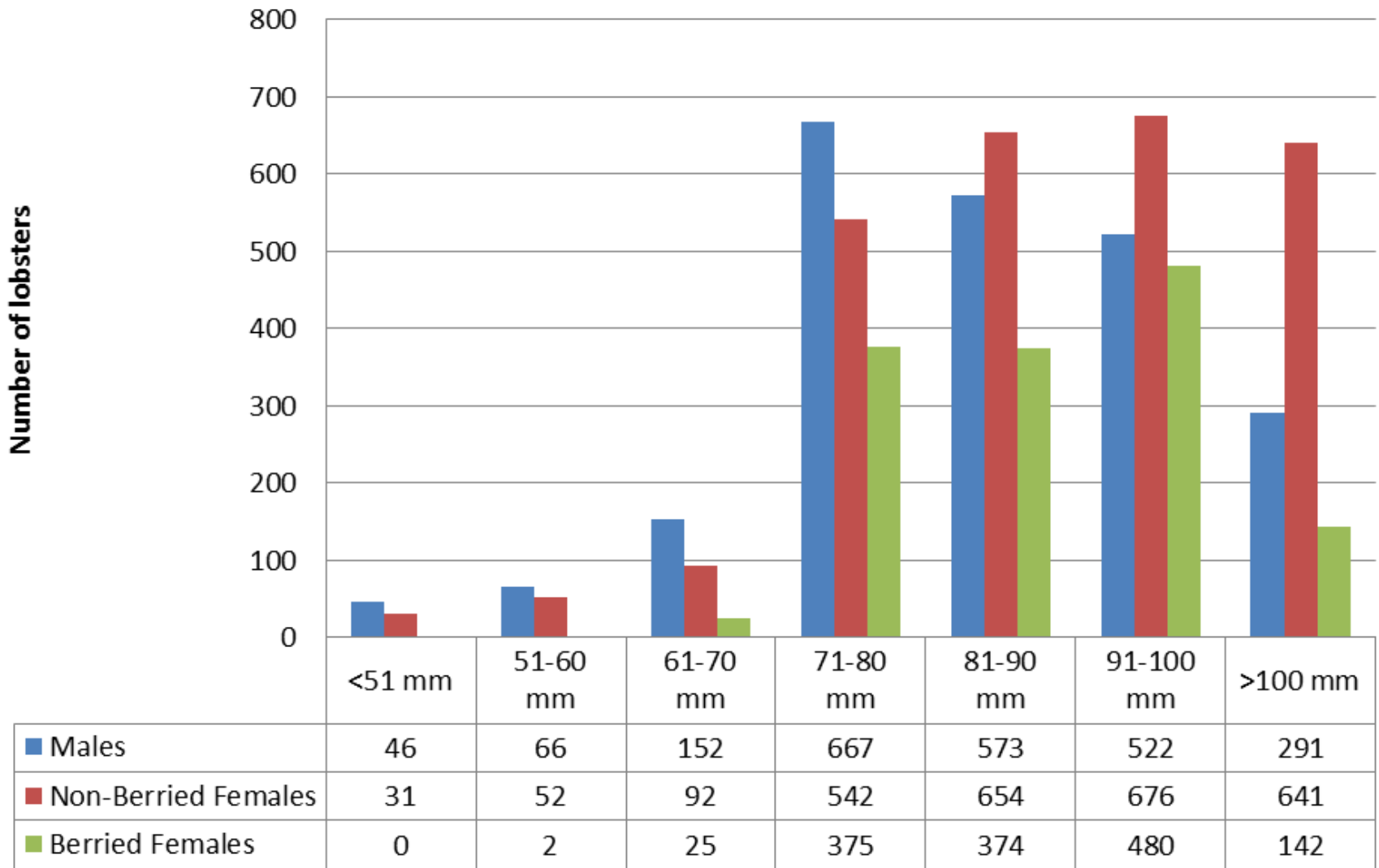
2012: 6346 Lobsters

2013: 5157 Lobsters

2014: 6403 Lobsters



# Summary of catches for LFA 30 2014



**2012: Males: 2753**

**Non berried females: 2094**

**Berried Females: 1499**

**2013: Males: 1749**

**Non berried females: 1988**

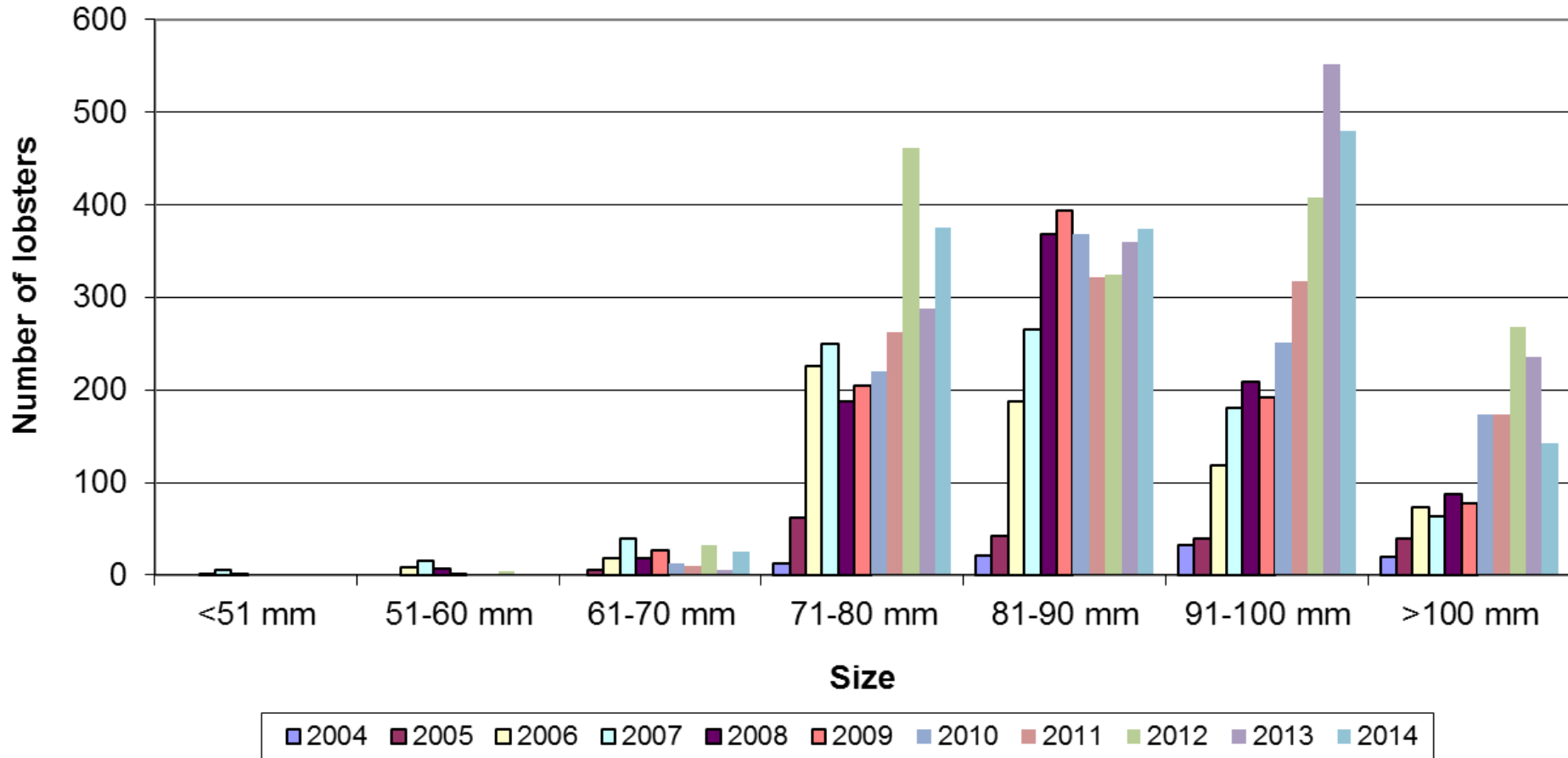
**Berried Females: 1440**

**2014: Males: 2317**

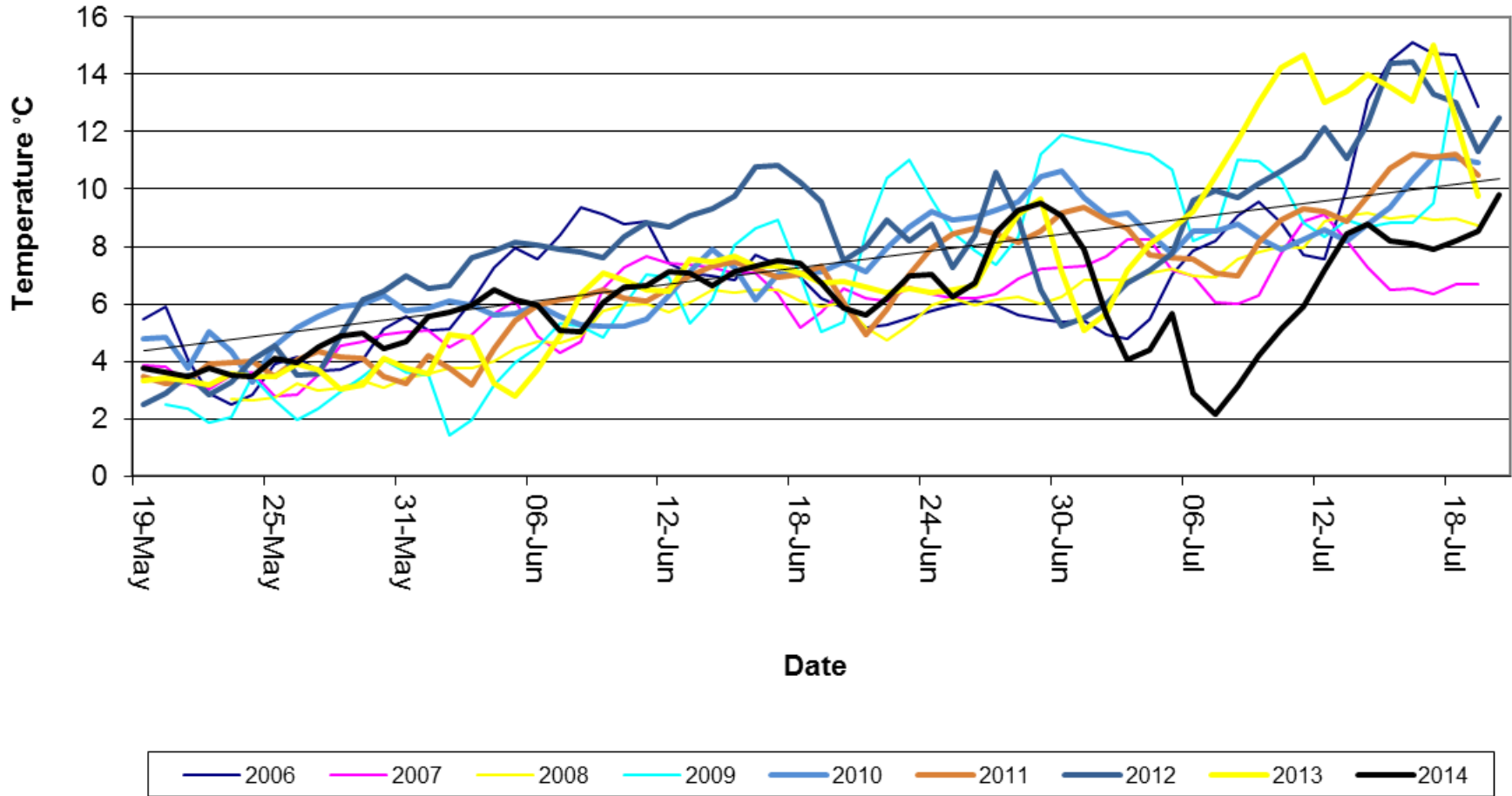
**Non berried females: 2688**

**Berried females: 1398**

# Number of berried females caught in FSRs Recruitment Traps Spring LFA 30



# Average Bottom Temperatures for LFA 30



**2012: quite a bit warmer than average 2013: back to average temperatures though warmer at end of season**

**THANK YOU FOR YOUR CONTINUING  
PARTICIPATION IN THIS STUDY**

