

FISHERMEN AND SCIENTISTS RESEARCH SOCIETY

LOBSTER RECRUITMENT INDEX FROM STANDARD TRAPS

LFA 27 2014 update



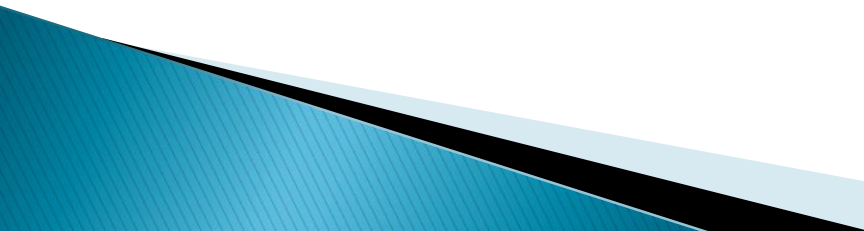
Lobster Recruitment project trap measures 14"x 21"x 40". It has 1 " mesh, no escape vents and a biodegradable panel

Shannon Scott-Tibbetts

April 14, 2015

FSRS Lobster Recruitment Index Project– LFA 27

Important Points and Reminders

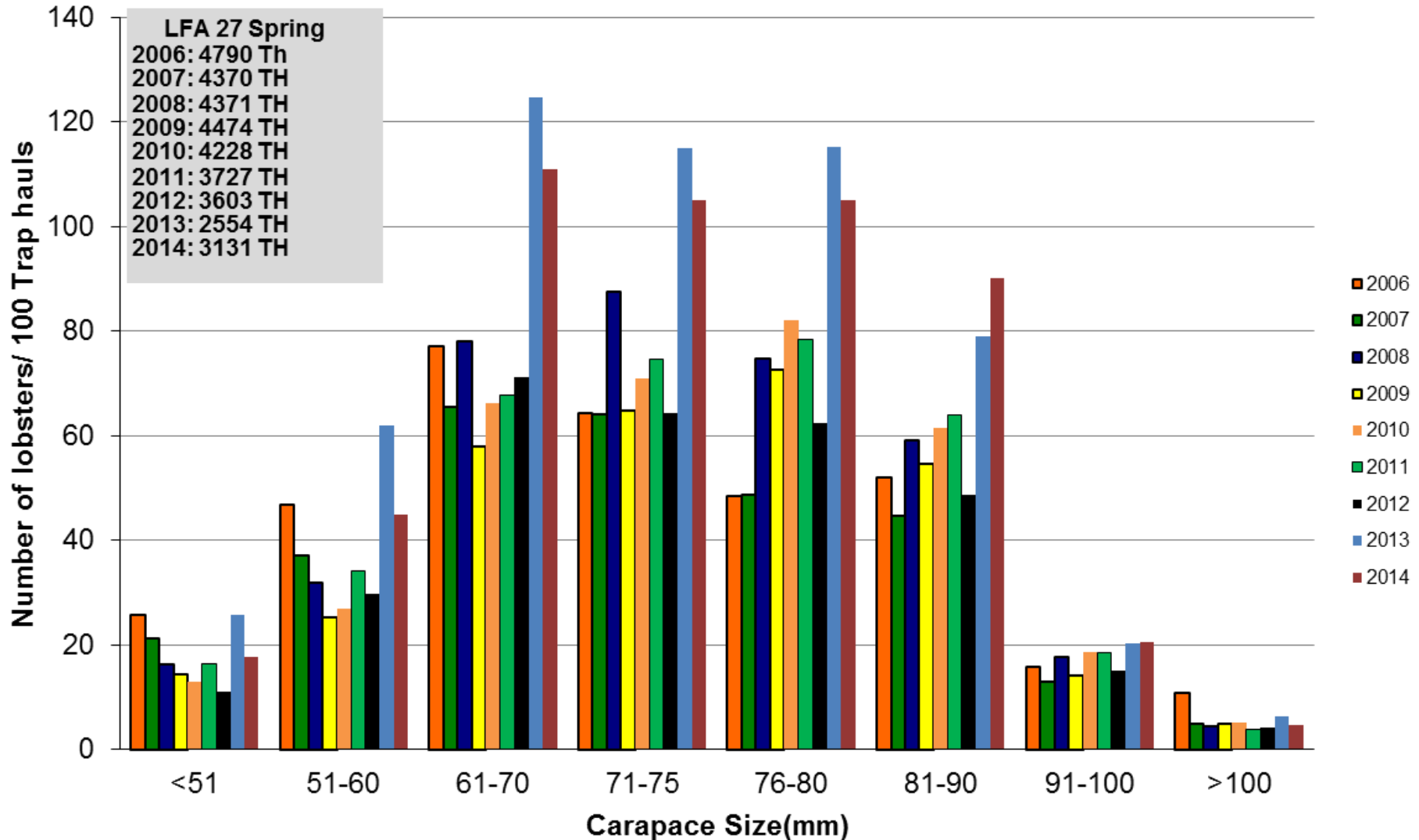
- Traps as addition to your legal limit and must display the scientific tags provided.
 - Keep a copy of the scientific permit on board the vessel.
 - Must abide by the conditions of the scientific permit.
 - Able to keep all legal lobsters from the science traps. Return all undersized and berried lobsters caught in the traps
- 

- Recruitment Project traps to be fished in same location throughout season. If move traps record new position and advise FSRS.
- If lose trap, report it and scientific tag number lost to FSRS office immediately.
- If lose minilog report it to FSRS office immediately.
- There will be no FSRS fisheries technician sampling this spring due to lack of funding, please follow up any issues with the FSRS staff in Dartmouth.

Shannon Scott-Tibbetts
FSRS Research Biologist
Or
Tricia Pearo
FSRS Senior Fisheries Technician

1-800-226-3777 or 902-461-8119

Catch Summary for LFA 27 Spring season



2012: 23 participants

2012: 11,073 lobsters

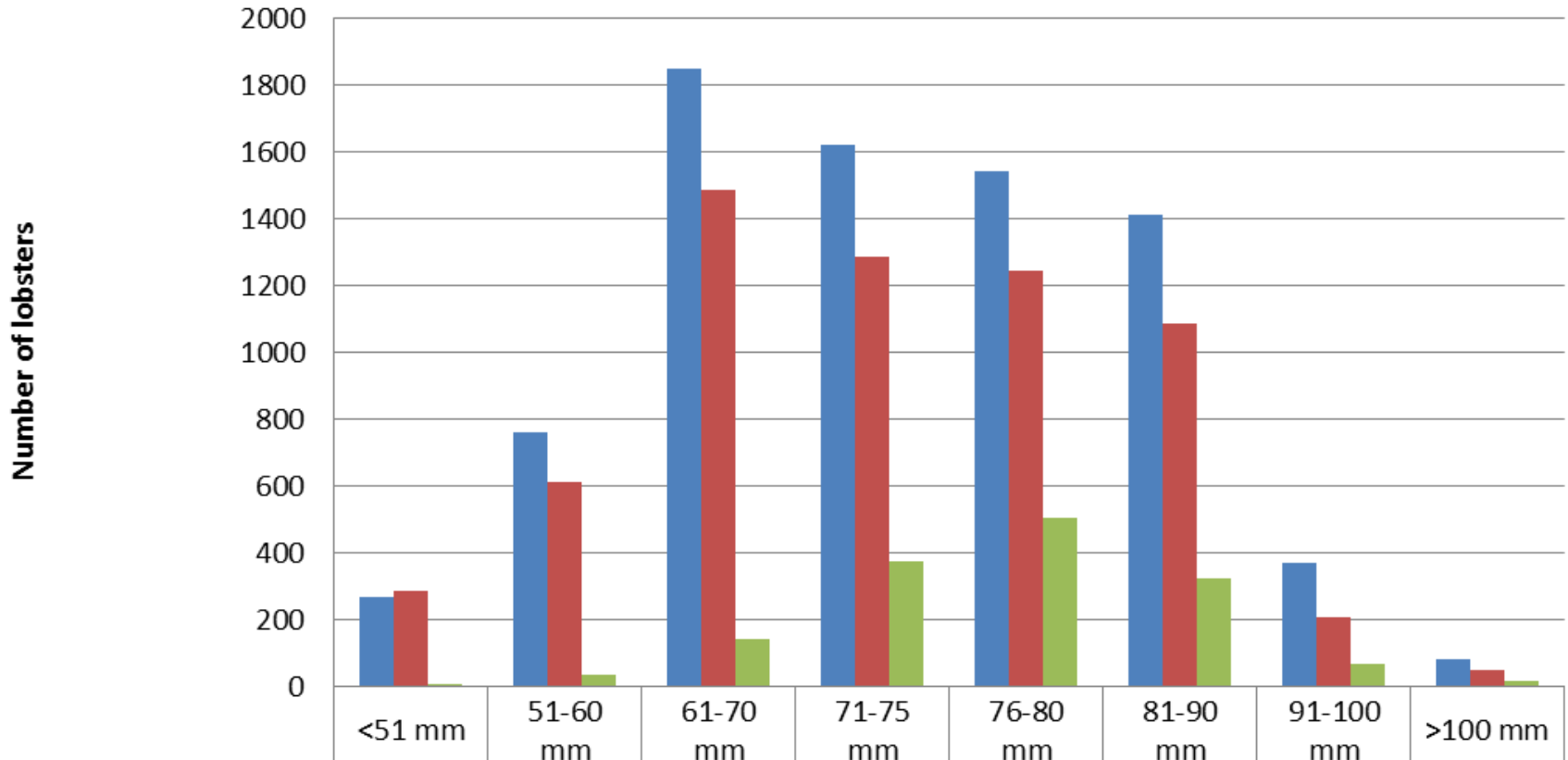
2013: 21 participants

2013: 14,013 lobsters

2014: 21 participants

2014: 15,638 lobsters

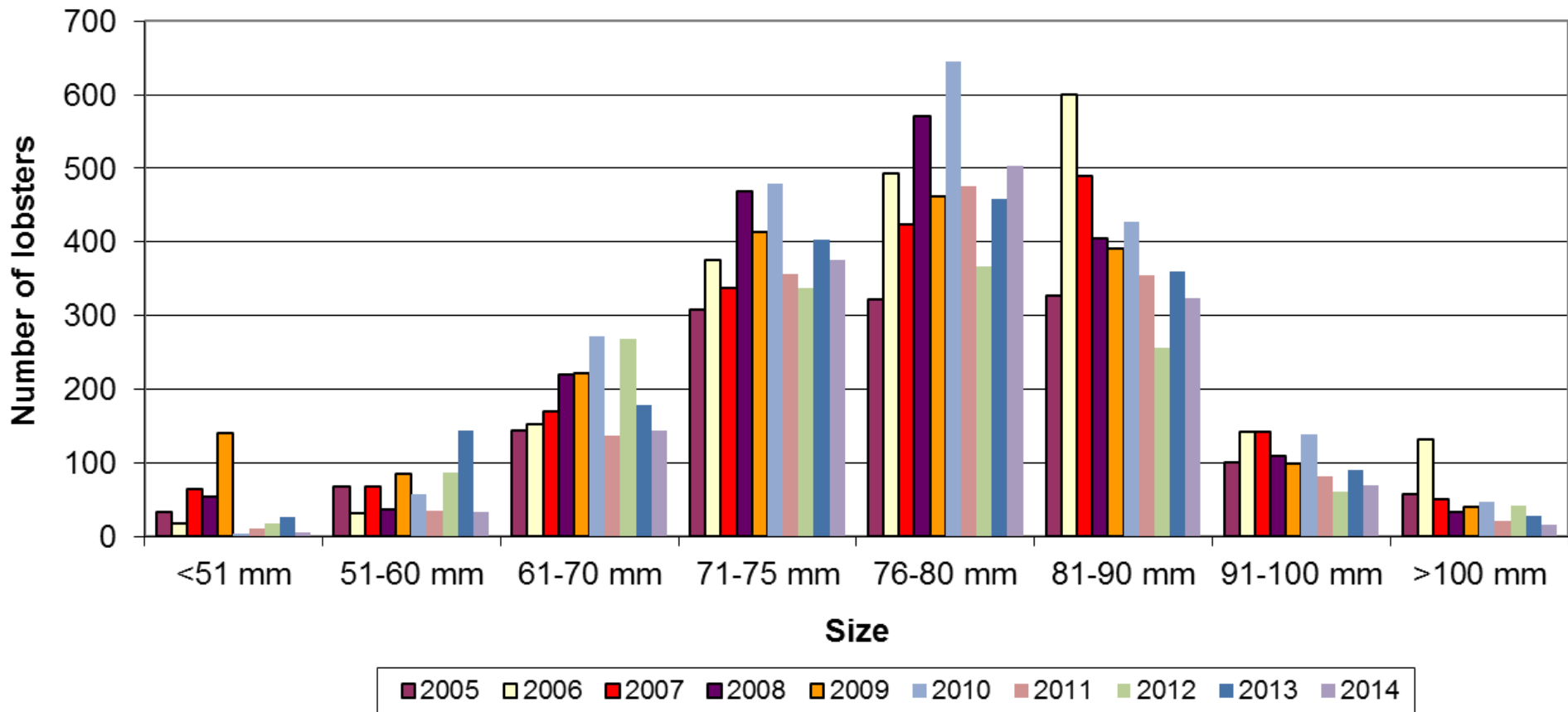
Summary of catches for LFA 27 2014



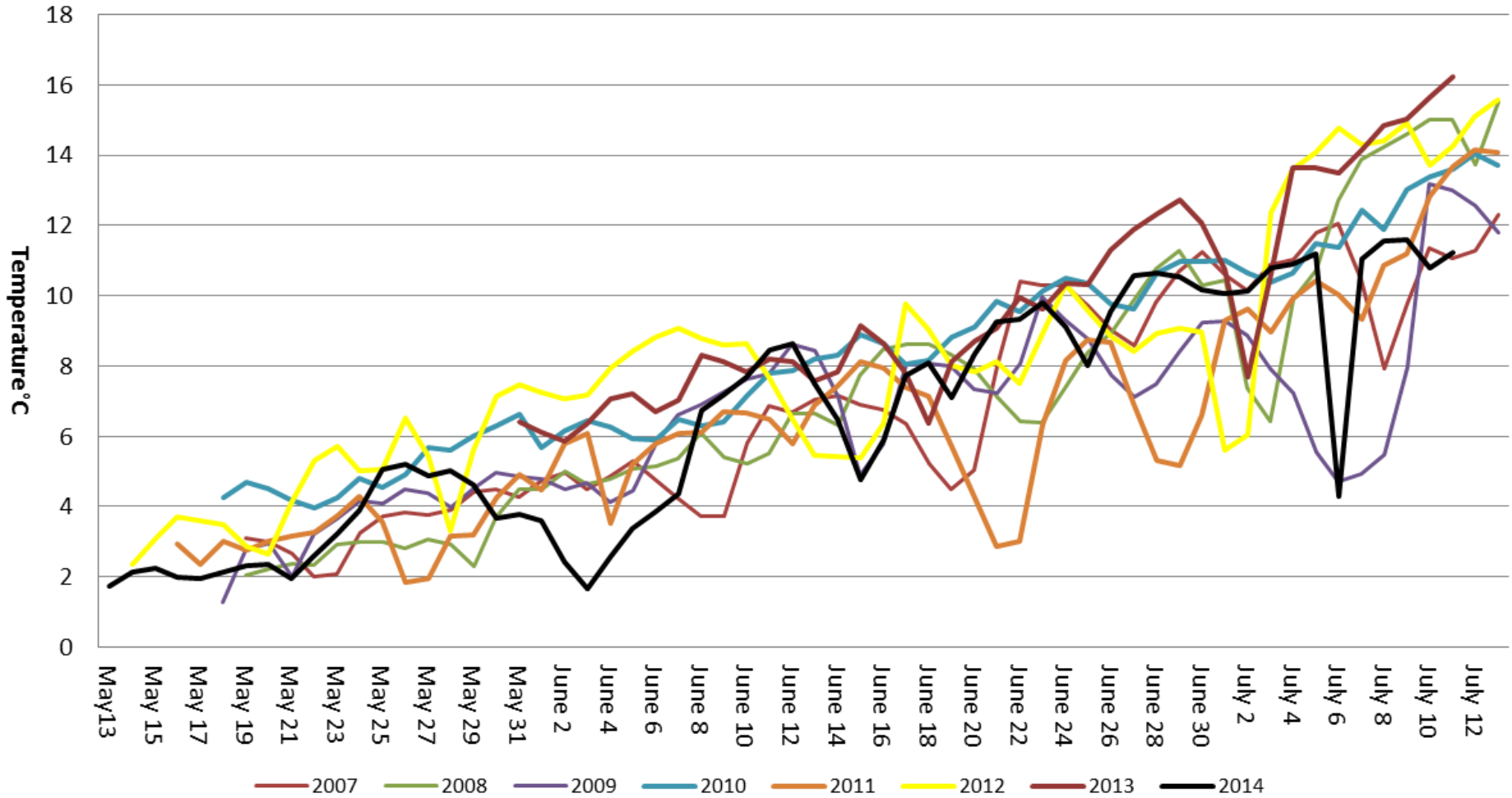
| | <51 mm | 51-60 mm | 61-70 mm | 71-75 mm | 76-80 mm | 81-90 mm | 91-100 mm | >100 mm |
|-----------------------|--------|----------|----------|----------|----------|----------|-----------|---------|
| ■ Males | 267 | 763 | 1849 | 1623 | 1542 | 1412 | 369 | 84 |
| ■ Non-Berried females | 285 | 611 | 1485 | 1287 | 1247 | 1088 | 206 | 49 |
| ■ Berried females | 6 | 33 | 143 | 376 | 504 | 324 | 69 | 16 |

2012: males: 5615 non-berried females: 4022 berried females: 1436
2013: males: 7074 non-berried females: 5254 berried females: 1685
2014: males: 7909 non-berried females: 6258 berried females: 1471

Number of berried females caught in FSRS Recruitment Traps Spring for LFA 27

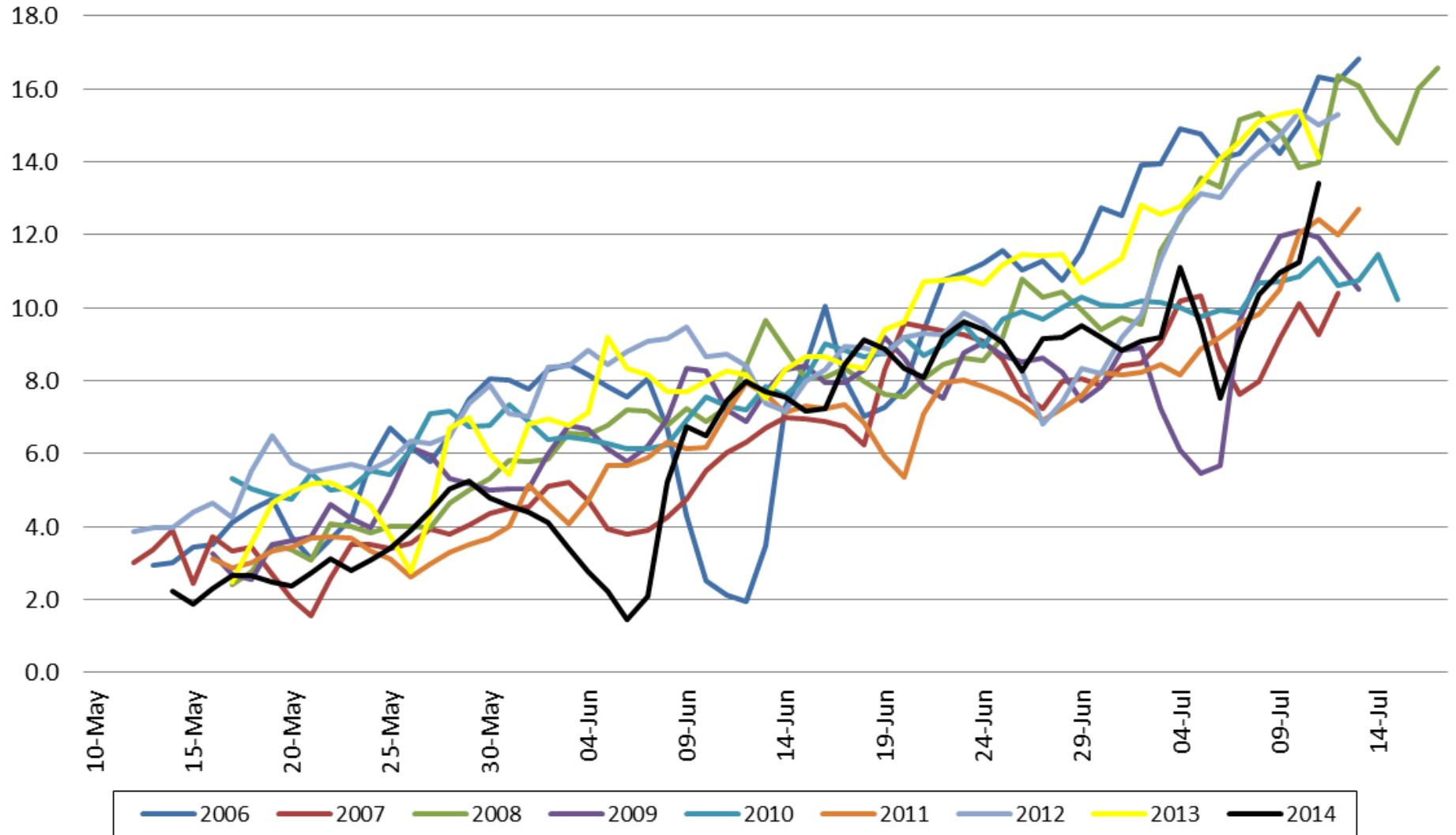


Average Bottom Temperatures for Ingonish area



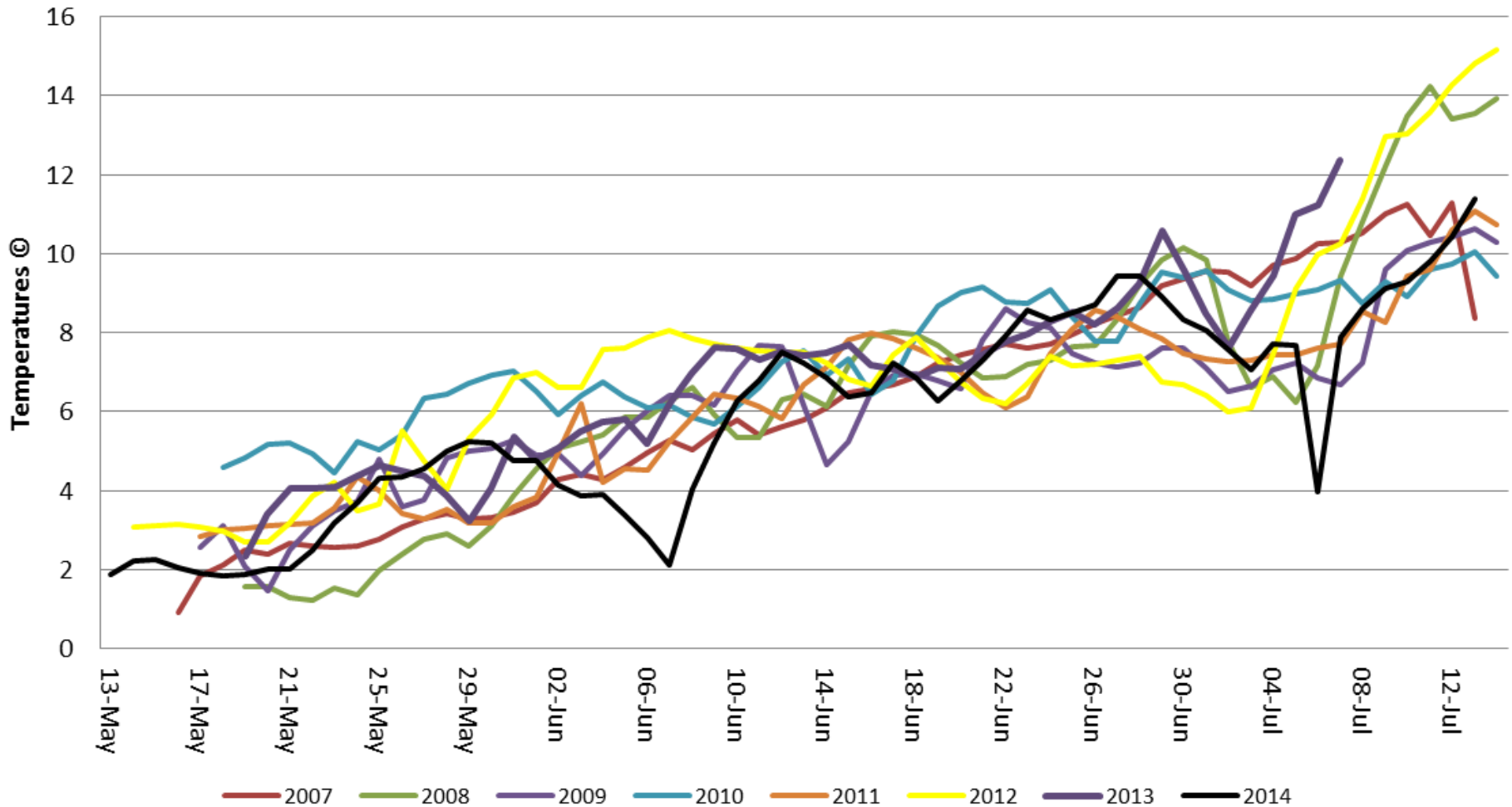
2011: cooler throughout most of season than year before, 2012: much warmer year overall than 2011, 2013: similar to year before though slightly cooler at beginning of season

Average Bottom Temperatures for Sydney area



2011: cooler than year before. 2012: much warmer than year before, 2013: cooler at beginning of season but warmed up in June

Average Bottom Temperatures for Port Morien/ Mira Bay area



2010 temperatures show an increase from 2009. 2011: cooler than year before. 2012: warmer year than 2011 overall

**THANK YOU FOR YOUR CONTINUING
SUPPORT AND PARTICIPATION**

